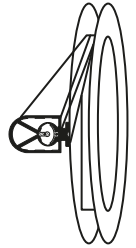
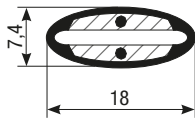


SENSITIVE EDGE TYPE “BOC”

TYPE BOC

Roll of 100 m



N.B. Upon request the sensitive edge can be supplied in conformity with the EN 45545-2-2013+A1:2015 Standard.

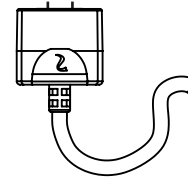
“DO-IT-YOURSELF” VERSION

Please order the single components according to the following pattern:

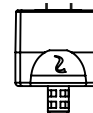
- 1 Pack of **profile BOC** (standard roll of 100 meters)
- 1 **kit end cap/needle connectors** type KCDAG (1 end cap/connector with resistance type KCOAGR + 1 end cap/connector with electric cable type KCOAGC)
- 1 **aluminium support** with unit of measure expressed in linear meters (type SAC15 for edge fastening type BOC-AG)
- 1 **Primer** bottle (10ml) code PR
- 1 **Sealant** bottle (10ml) code CY

CONNECTORS

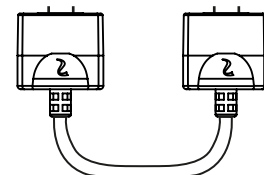
KCOC | End cap/connector with cable | Length 3 m



KCOR | End cap/connector with resistance | Pack of 2 pcs.



Double end cap/connector with cable | Length 0.17 m or 0.5 m



SUPPLY CABLE OUTLET

“UT” | Head outlet



“CCCC” | Double cable outlet



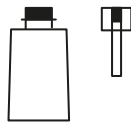
CABLE

S: CS - Standard Cable, 2x0.35 mm² 3 m in length, FROR 300/500

__: For lengths other than the standard one, please indicate the cable length e.g. 10 m = C10.

SEALANTS FOR “DO-IT-YOURSELF” EDGES

“GSBPR” | Primer bottle (10 ml) type PR



“GSBCY” | Sealant bottle (10 ml) type CY



HOW TO ORDER AN EDGE TYPE “BOC” AND “BOC-AG” (ASSEMBLED)

Code

